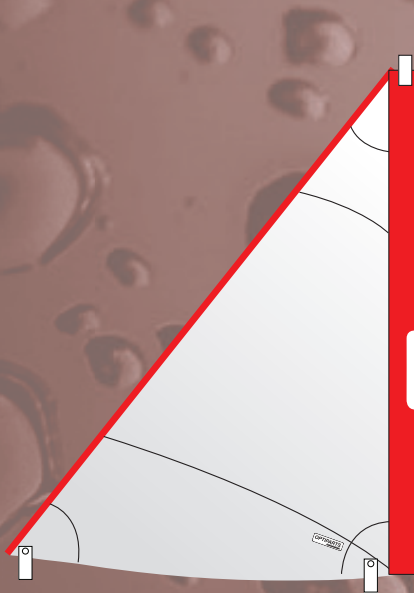


SLEEVE POCKET SAILS

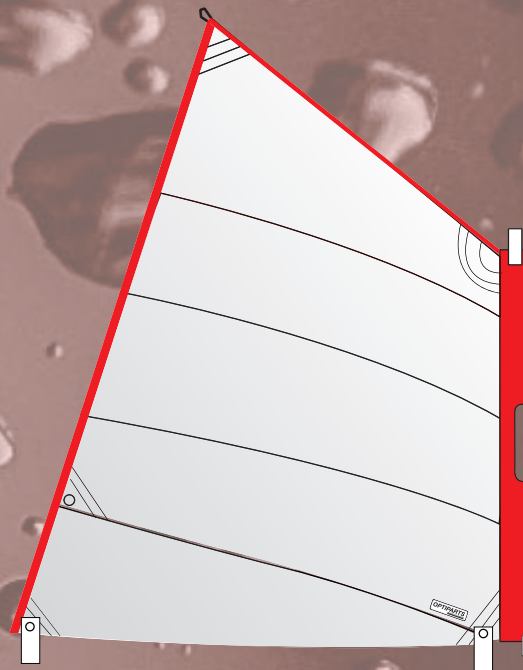
SLEEVE POCKET SAILS

These sleeve pocket sails are ideal for sailing schools. The mast slides in a sleeve pocket while the sail is loose footed on the boom. Made of strong 3.8 oz sailcloth. They have reinforced corners and webbing loops for the boom. The EX1061M trisail is half the size of a normal Optimist sail to be able to sail in heavy winds. The EX1061WR can be used with the reef eye, the boom goes up and gives more headspace for the sailor.



EX1061M - Trisail

Required:
- EX1012 sleeve mast
- EX10122 40cm mast extender
- Boom



EX1061WR - Sleeve pocket sail white with reef eye

Best to use with:
- EX1053 fixed sleeve school set

OPTIONAL:



EX10121
10 cm mast extender



EX10121S
20 cm mast extender



EX10122 (only for Trisail)
40 cm mast extender



EX1430
Telltales



EX1446
Head protector



EX1061W - Sleeve pocket sail white

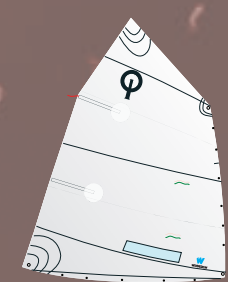
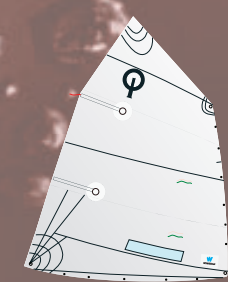
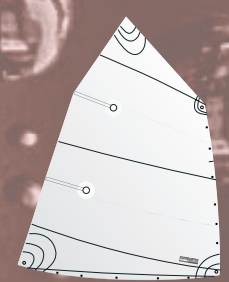
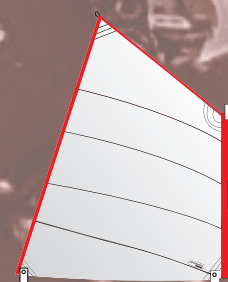
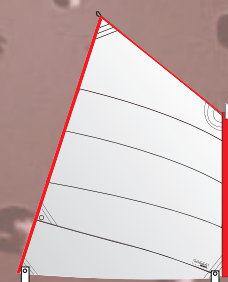
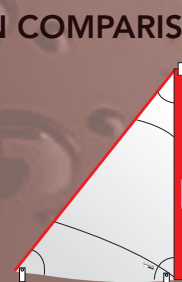
Best to use with:
- EX1052 sleeve school set



EX1061 - sleeve pocket sail colored

Best to use with:
- EX1052 sleeve school set

SAIL COLLECTION COMPARISON:



	EX1061M - Trisail	EX1061WR - Sleeve pocket sail white with reef eye	EX1061W - Sleeve pocket sail white	EX1061 - Sleeve pocket sail colored	EX1060 - School sail	EX1059 - Club sail	EX1057A - Windesign Durarace Lite sail	EX1058A - Windesign Durarace Power sail
Sailor	> 18 kg	> 20 kg	> 25 kg	> 25 kg	> 25 kg	> 25 kg	< 45 kg	> 45 kg
Level	School / Beginner	School / Beginner	School / Beginner	School / Beginner	Intermediate	Intermediate / Race	Race / Advanced	Race / Advanced
Sailcloth	Dacron sailcloth 3.8 oz	Dacron sailcloth 3.8 oz	Dacron sailcloth 3.8 oz	Dacron sailcloth 3.8 oz	Dacron sailcloth 3.8 oz	Dacron sailcloth 3.8 oz	Challenge sailcloth 4.18 oz	Challenge sailcloth 4.18 oz
Color	White / Red	White / Red	White / Red	Blue / Yellow / Red	White	White	White	White
Rolled / Folded	Folded	Folded	Folded	Folded	Folded	Folded	Rolled	Rolled
Mast mounting	Sleeve	Sleeve	Sleeve	Sleeve	Eyes	Eyes	Eyes	Eyes
Lacing lines	No, not necessary	No, not necessary	No, not necessary	No, not necessary	Yes, not included	Yes, not included	Yes, not included	Yes, not included
Window	No	No	No	No	No	Yes	Yes	Yes
Telltales	Optional, not included	Optional, not included	Optional, not included	Optional, not included	Optional, not included	Optional, not included	Included, 5 pieces applied	Included, 5 pieces applied
Class logo	No	No	No	No	No	Yes	Yes	Yes
Sail battens	No	No	No	No	Included, untapered, 2 pieces	Included, untapered, 2 pieces	Included, tapered, 2 pieces	Included, tapered, 2 pieces
Reef eye	No	Yes	No	No	No	No	No	No
Allowed for racing	No	No	No	No	No	Yes, including IODA sail button	Yes, including IODA sail button	Yes, including IODA sail button
Measurement	Not applicable	Not applicable	Not applicable	Not applicable	Not applicable	Optional measurement and applying sailnumber	Optional measurement and applying sailnumber	Optional measurement and applying sailnumber
Sailbag (type)	Yes, for folded sail	Yes, for folded sail	Yes, for folded sail	Yes, for folded sail	Yes, for folded sail	Yes, for rolled sail	Yes, for rolled sail	Yes, for rolled sail